

# The impact of the corona virus on unemployment

## Behind the scenes: Making of the story

### Idea behind the story

The economic impact of the corona virus is big and a local governmental official made a prediction of this. That was a trigger to look at the official governmental data that are available.

### Searching a good data source

I found interesting detailed information on county level that was used to gain insights into the mismatch between skills and knowledge of job seekers and the type of jobs that are actually available. This information is published weekly and would allow me to see changes in job seekers.

### Understanding the data source

I downloaded and found out the information is actually (very) granular, but information is left out if a group is less than 10 persons for privacy reasons.

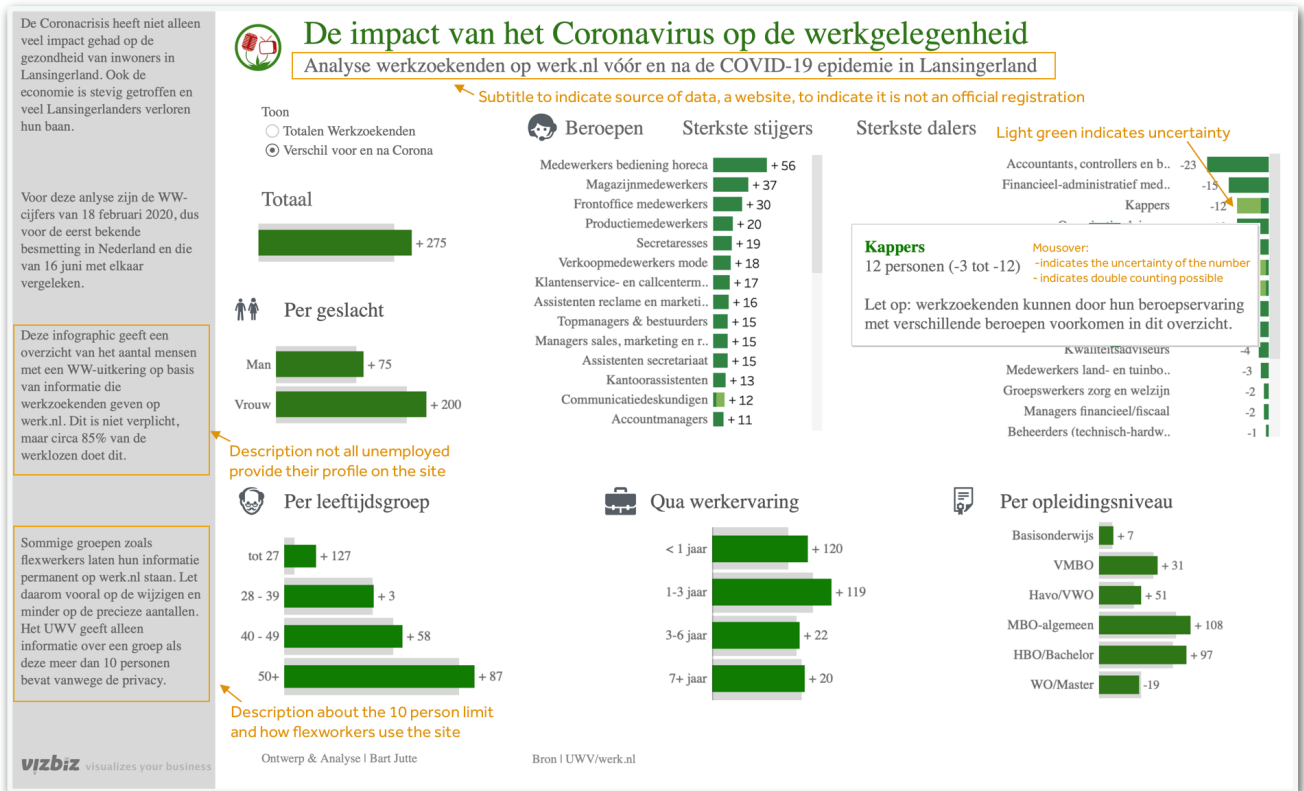
To get a better understanding of the data I created a data biography taking the template of Heather Krause as a basis and adding a few points (see table). The data set I had already had a description, so I had pretty good idea of the data. One of the worrying aspects was if

<b>Naam Dataset</b>	Open Match Data UWV Werkbedrijf
<b>Link naar databron</b>	<a href="http://data.overheid.nl/dataset/84e76ca2-f91b-427d-918b-6a6d8299b3d3">http://data.overheid.nl/dataset/84e76ca2-f91b-427d-918b-6a6d8299b3d3</a>
<b>Link naar opslag data</b>	<a href="https://data.overheid.nl/dataset/uwv-open-match-data">https://data.overheid.nl/dataset/uwv-open-match-data</a>
<b>Verzamelaar data</b>	UWV
<b>Eigenaar data</b>	UWV (Uitvoeringsinstituut Werknemersverzekeringen)
<b>Manier van verzamelen</b>	Via site <a href="http://werk.nl">werk.nl</a> die UWV gebruikt
<b>Wie maakt (geen) deel uit van data</b>	CVs die actief zijn, worden meegenomen. Data wordt geaggregeerd naar referentieberoepen en beroepenclusters. Als minder dan 10 personen in een groep zitten, wordt hierover niet gerapporteerd ivm de privacy.
<b>Wanneer verzameld</b>	wekelijks
<b>Laatste tijdstip actualisatie</b>	30/6/2020
<b>Reden(en) dataset</b>	CV- en vacaturedata transparant te maken, <a href="https://tinyurl.com/y9yrohxz">https://tinyurl.com/y9yrohxz</a>
<b>Datakwaliteit Notities</b>	Rapportages op postcodeniveau bevatten veel gaten door ondergrens 10 personen. Info voor 10-12-2019 niet volledig, want en daardoor niet goed bruikbaar
<b>Voorwaarden gebruik</b>	CC-BY (4.0), <a href="https://creativecommons.org/licenses/by/4.0/deed.nl">https://creativecommons.org/licenses/by/4.0/deed.nl</a> . Noem bron en geef wijzigingen aan die je hebt gedaan
<b>Contact Bron</b>	<a href="mailto:maarten.dekker@uwv.nl">maarten.dekker@uwv.nl</a> , UWV WERKbedrijf
<b>Vragen</b>	Welke CVs worden niet meegenomen? Wanneer is een CV niet meer actief?

information was not double counted, one person having experience in multiple professions.

The data owner was mentioned in the data description provided and he gave me good background information when I called him. Double counting of professions was indeed possible and some unemployed, about 15%, did not register on the site (it was not obligatory). Also some people, temporary employed persons, didn't remove their profile or status when they got a job, just to be always "in the market" for new jobs.

Based on the provided information, I have updated the infographic to provide more nuance and context to the story. See the orange points in the figure below.



Given the limitations of our current website, I had to rearrange the infographic, but the contextual information has remained. The aim is to make a new section of the website to better accommodate for infographics.

The data biographies are currently stored in a Dropbox account. We want to move them and the raw and refined data sources to a Github account later to make it more future proof and be able to provide access to others. The data for our charts is already in the public domain as other users can download the resource using Tableau software.

The article and interview on the unemployment can be found here:

<https://rtvlansingerland.nl/2020/07/17/werkloosheid-treft-lansingerland-minder-hard-dan-de-regio/>

The actual infographic is published on Tableau Public here: [https://public.tableau.com/profile/rtv.lansingerland#!/vizhome/ImpactCoronaopwerkgelegenheidLansingerland\\_15949869883500/WWLansingerland](https://public.tableau.com/profile/rtv.lansingerland#!/vizhome/ImpactCoronaopwerkgelegenheidLansingerland_15949869883500/WWLansingerland)

